

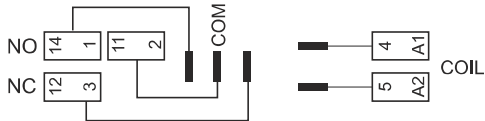


# S1D

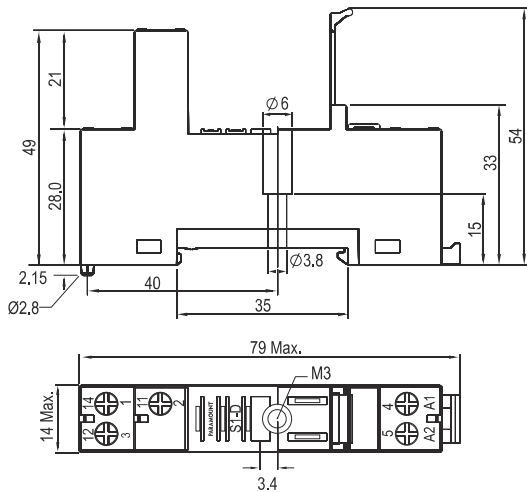
Only  
**14 mm**  
WIDE

**Input / Output Socket [10A] for  
P1 CO Relays DIN Rail or Panel Mountable**

## Wiring Diagram



## Dimensions in mm.



## Accessories

S1D-B1



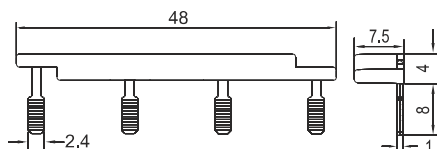
S1D-B4



## Dimensions in mm.



S1D-B1, 10A @ 250 VAC, 1 Way Bridge for Coil



S1D-B4, 10A @ 250 VAC, 4 Way Bridge for Coil

## Specifications

Poles 1 Change Over Contact  
Nominal load : 10A / 250V

**Insulation:** Di-electric strength, 1minute  
Between contact and coil 5 KV  
Between all terminals and DIN Rail 5 KV  
Between adjacent terminals 3 KV

Brass Tin Plated Screw  
Max. screw torque 1.2 Nm  
Screw dimensions M3, Pozi

**Wire in-lets capacity:**  
Solid Wire 4 mm<sup>2</sup> or 2 x 2.25 mm<sup>2</sup>  
Multi core 22 14 AWG  
Ferrule tip terminals 4 mm<sup>2</sup>

## Other Aspects

Weight Approx. 28 gms  
DIN Rail / Panel Mountable  
Integrated Relay Hold Down Clip  
Removable White Marking Label  
EN / DIN Sequential Numbering according to  
EN 60947 & IEC 61810

## Accessories

Bridge Bar S1D-B1 & S1D-B4 for Coil Terminal ( A2 / 5 )

## Suitable Relays : P1, P1-T, P1-M

## Approvals

